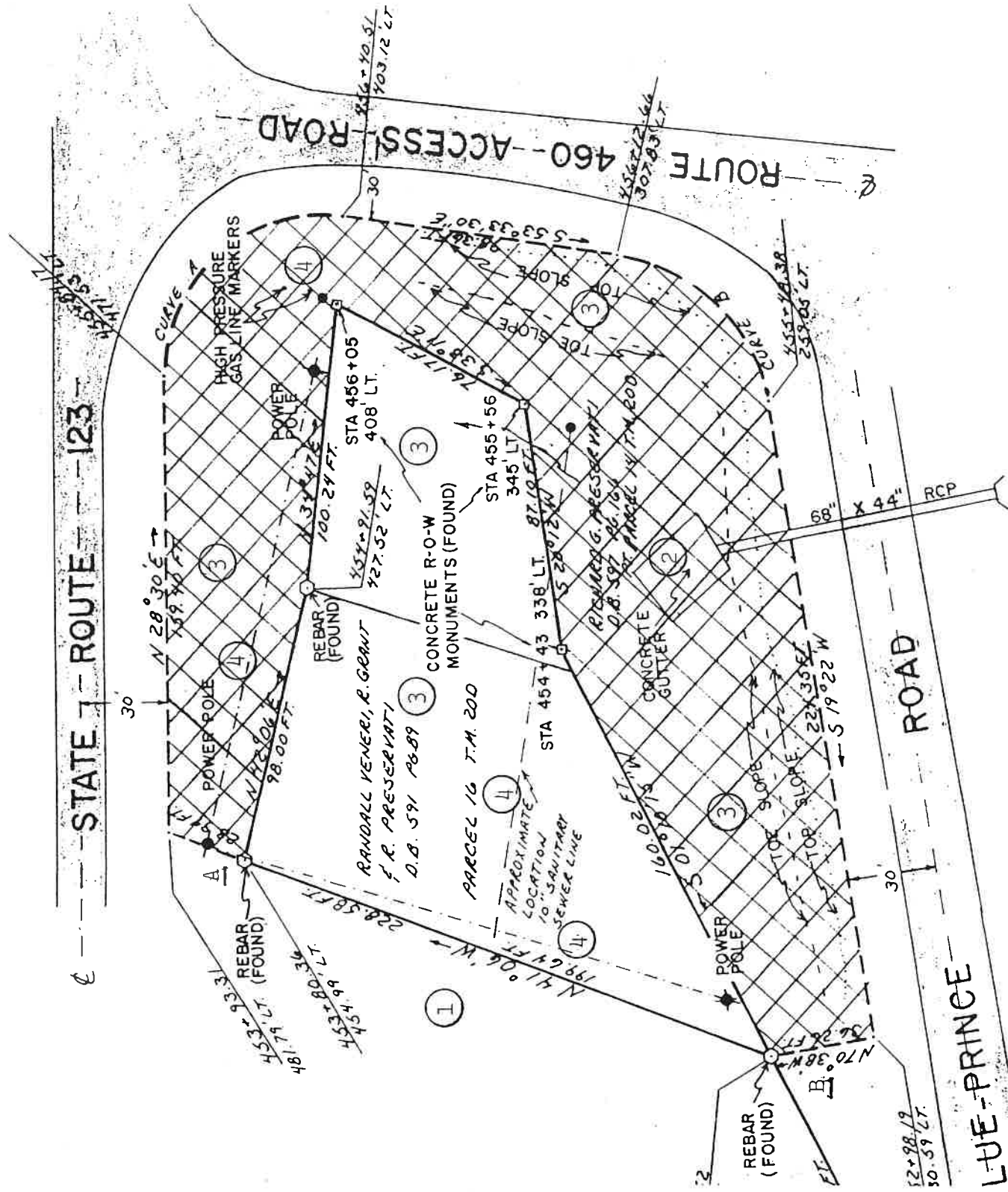
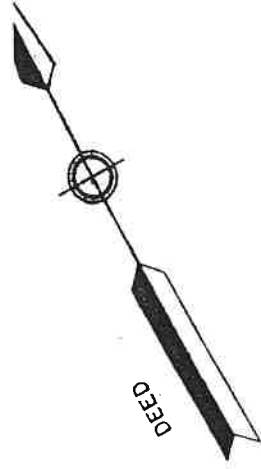


RITCHIE EQUIPMENT, INC.
 Proposed Plot Plan for
 the development of its
 property and WV DOH R/W
 on WV Routes 123 and
 19/33 in Green Valley,
 Mercer County, WV.

Scale 1"=50'



- ① Construct a drainage ditch from A to B with 1° to 3° grade along south line of property to empty into a pipe at B, pipe connected to drop inlet at ② (pipe size to be specified by DOH);
- ② Construct and establish surface drop inlet with top grill and side inlet opening (opening size to be specified by DOH) to connect to pipe along east line of property from ditch on the east line of property;
- ③ Fill entire area (lots and R/W) to elevation near surrounding Routes with slope of all toward drop inlet ② and
- ④ Contact utilities and facilitate move of installations to areas of the property not to be impacted by construction with letters from each utility to verify contact and arrangements made.